

4

3

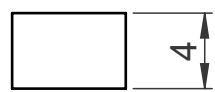
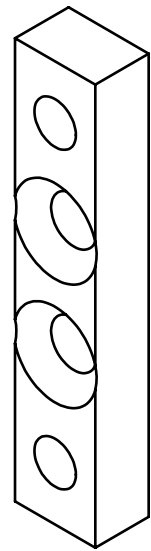
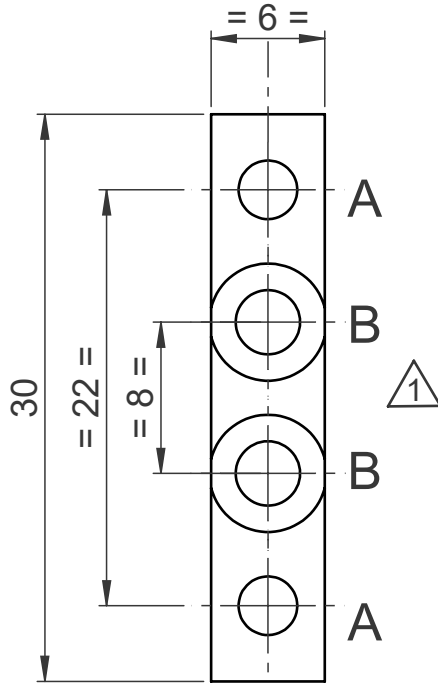
2

1

| | |
|--|-----------|
| DEVIATION FOR NON - TOLERANCED DIMENSIONS (IS : 2102 - MEDIUM) | |
| ABOVE | 0.5 |
| UP TO | 6 |
| TOL. | ±0.1 |
| ABOVE | 30 |
| UP TO | 120 |
| TOL. | ±0.2 |
| ABOVE | 315 |
| UP TO | 1000 |
| TOL. | ±0.3 |
| ABOVE | 6 |
| UP TO | 30 |
| TOL. | ±0.5 |
| ABOVE | 6 |
| UP TO | 30 |
| TOL. | ±0.8 |
| ABOVE | 100 |
| UP TO | 200 |
| TOL. | ±1.2 |
| ABOVE | 0.5 - 6 |
| UP TO | 6 - 30 |
| TOL. | ±1° |
| ABOVE | 30 - 120 |
| UP TO | 120 - 400 |
| TOL. | ±20' |
| ABOVE | 20 - 400 |
| UP TO | 400 |
| TOL. | ±10' |

F

F



D

D

C

C

HOLE DETAILS

| SL No | REF | DESCRIPTION | QTY |
|-------|-----|--------------------------------------|-----|
| 1 | A | DRILL ϕ 3.1 AND M3 HELICOIL TAP | 2 |
| 2 | B | ϕ 3.2 CSK TO ϕ 6.2 | 2 |

B

B

| 4 | | | | | | | | |
|-----|--------|----------|-------------|---------|----------|------------------|------|-----|
| 3 | | | | | | | | |
| 2 | | | | | | | | |
| 1 | | | | | | | | |
| 0 | | 03.11.15 | REVISED | | | | | |
| 0 | | 12.09.15 | ORIGINAL | | | DMA 36 098 0 604 | 07 | 02 |
| REV | CN.NO. | DATE | DESCRIPTION | CHECKED | APPROVED | NEXT ASSEMBLY | ITEM | QTY |

| | | | | | | |
|--|--|---------------------------|--|-----------|---|-------------|
| MATERIAL ALUMINIUM 6061-T6/6082-T6 | | FINISH BLACK ANODISING | | PROJ. | TOL.GEN. \pm IS:2102 TOL.AXIS. \pm (MED) | PRJ. 098 |
|--|--|---------------------------|--|-----------|---|-------------|

| | | | | | |
|-------------------|---------|----------|-------------|--------------|-------------------------------|
| DRAWN MANJULAL | CHECKED | APPROVED | DIMNS mm | SCALE NTS | TITLE BLOCK-PIRI CONNECTOR |
|-------------------|---------|----------|-------------|--------------|-------------------------------|

A

A

| | | | | | |
|---|------|------|---------------------------------|-------------------|------------|
| DATE 03.11.15 | DATE | DATE | DRG. NUMBER DPD 36 098 0 748 | SIZE A4 | ISSUE 1 |
| KERALA STATE ELECTRONICS DEVELOPMENT CORPORATION LIMITED | | | | NO.OF SHEETS 1 | 1 |

4

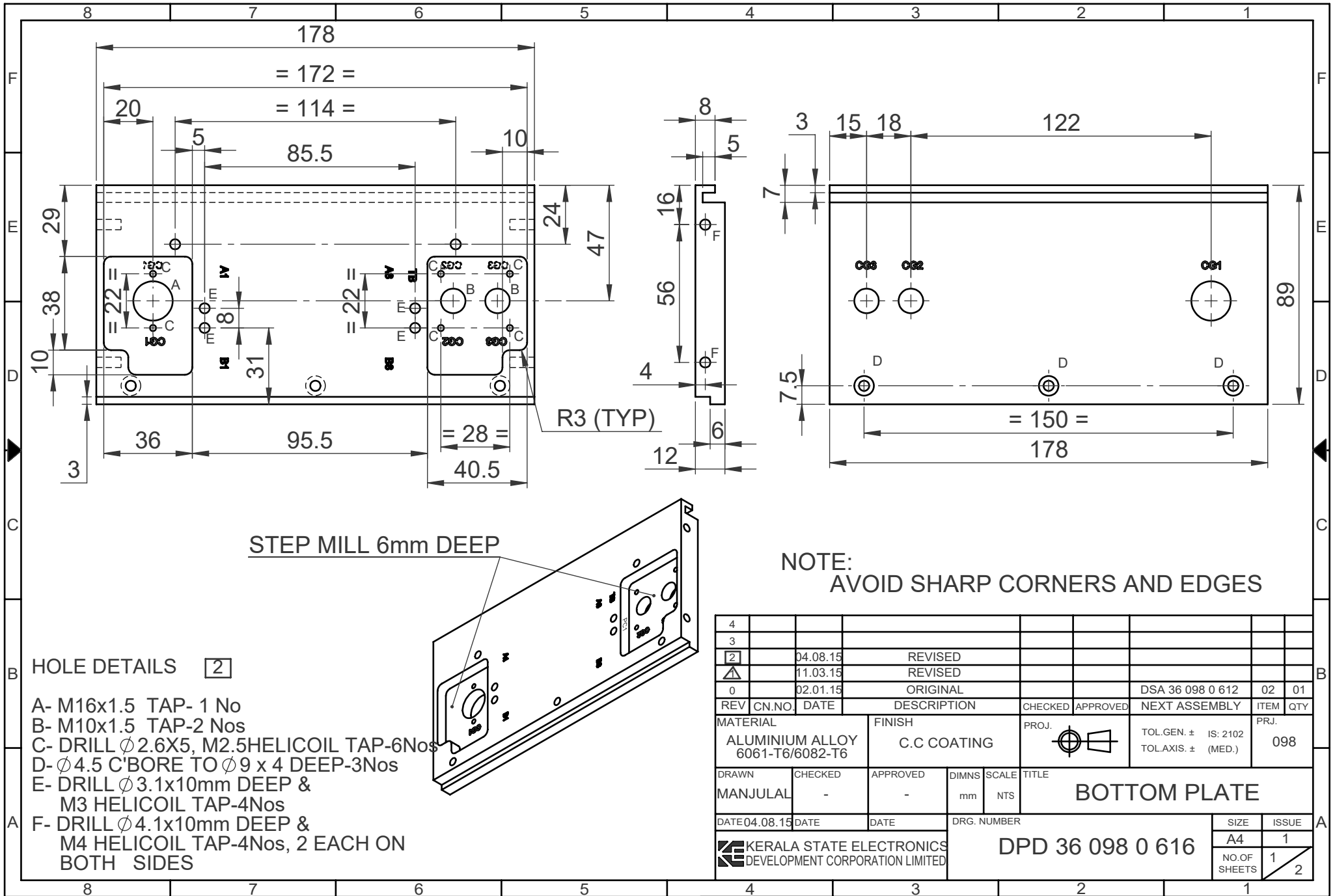
3

2

1

RESTRICTED

RESTRICTED

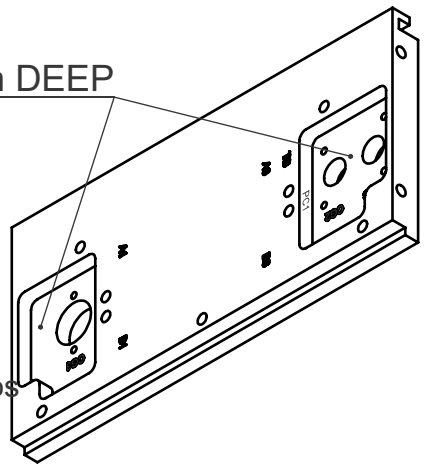


STEP MILL 6mm DEEP

NOTE: AVOID SHARP CORNERS AND EDGES

HOLE DETAILS [2]

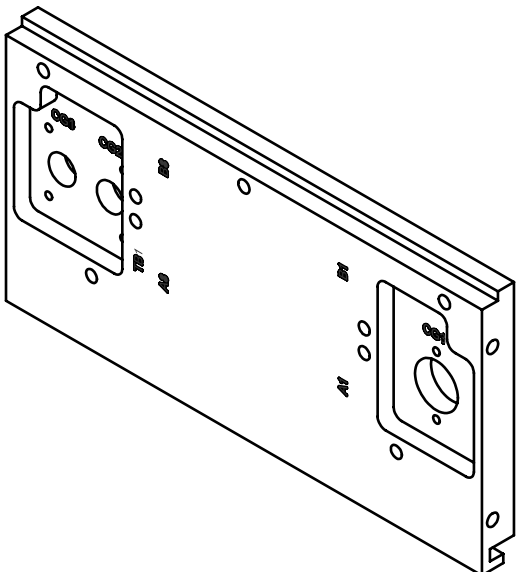
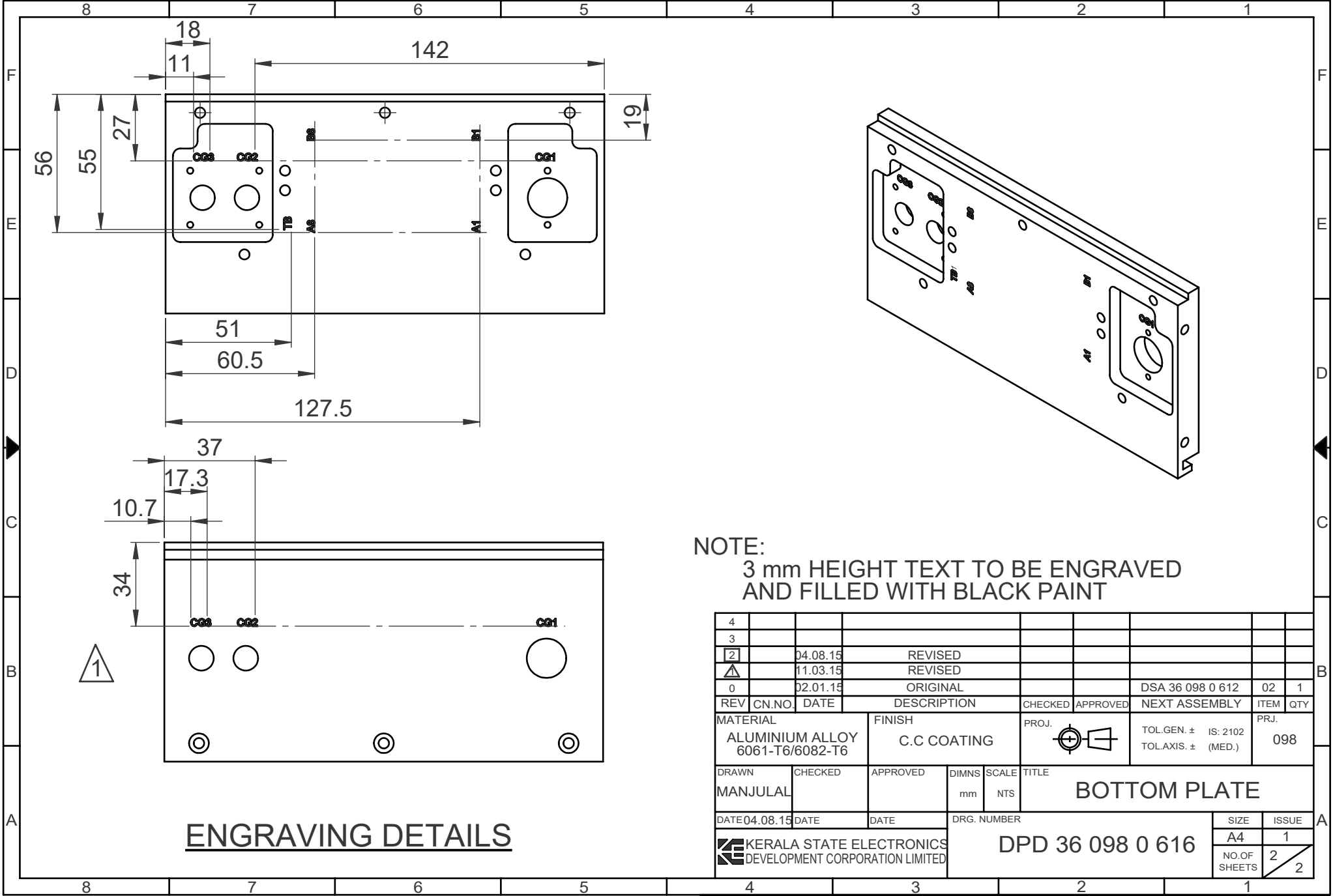
- A- M16x1.5 TAP- 1 No
- B- M10x1.5 TAP-2 Nos
- C- DRILL ϕ 2.6X5, M2.5HELICOIL TAP-6Nos
- D- ϕ 4.5 C'BORE TO ϕ 9 x 4 DEEP-3Nos
- E- DRILL ϕ 3.1x10mm DEEP & M3 HELICOIL TAP-4Nos
- F- DRILL ϕ 4.1x10mm DEEP & M4 HELICOIL TAP-4Nos, 2 EACH ON BOTH SIDES



| 4 | | | | | | | | | |
|--|----------|----------|-------------|-------------|--------------|-------------------------|------|--------------|---|
| 3 | | | | | | | | | |
| 2 | 04.08.15 | | REVISED | | | | | | |
| 1 | 11.03.15 | | REVISED | | | | | | |
| 0 | 02.01.15 | | ORIGINAL | | | DSA 36 098 0 612 | 02 | 01 | |
| REV | CN.NO. | DATE | DESCRIPTION | CHECKED | APPROVED | NEXT ASSEMBLY | ITEM | QTY | |
| MATERIAL | | | FINISH | | PROJ. | TOL.GEN. \pm IS: 2102 | | PRJ. | |
| ALUMINIUM ALLOY 6061-T6/6082-T6 | | | C.C COATING | | | TOL.AXIS. \pm (MED.) | | 098 | |
| DRAWN | CHECKED | APPROVED | DIMNS | SCALE | TITLE | | | | |
| MANJULAL | - | - | mm | NTS | BOTTOM PLATE | | | | |
| DATE | 04.08.15 | DATE | DATE | DRG. NUMBER | | SIZE | | ISSUE | |
| KERALA STATE ELECTRONICS DEVELOPMENT CORPORATION LIMITED | | | | | | DPD 36 098 0 616 | | A4 | 1 |
| | | | | | | | | NO.OF SHEETS | 1 |
| | | | | | | | | | 2 |

RESTRICTED

RESTRICTED



NOTE:
3 mm HEIGHT TEXT TO BE ENGRAVED
AND FILLED WITH BLACK PAINT

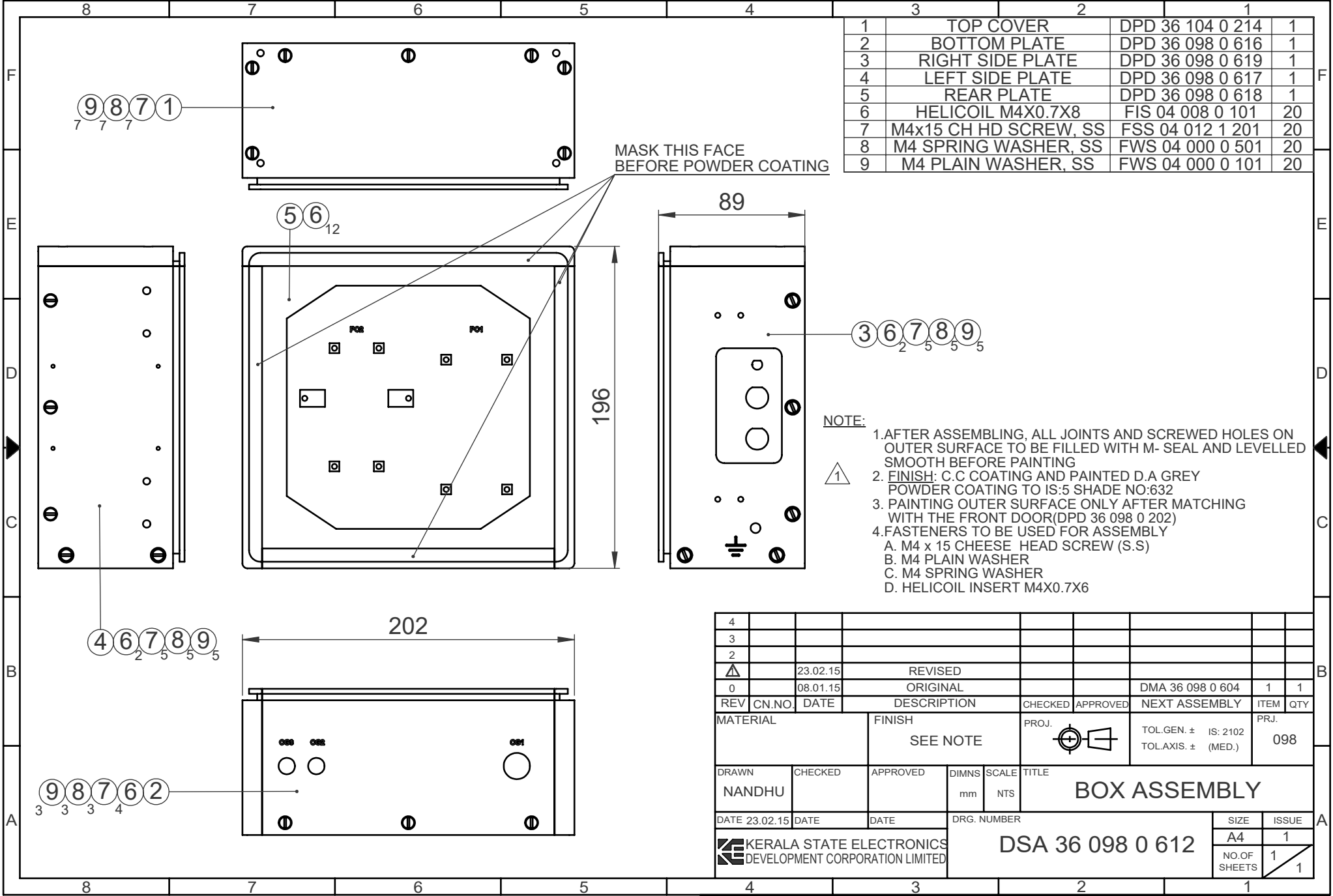
| 4 | | | | | | | | | |
|------------------------------------|----------|----------|-------------|------------------|--------------|--------------------|--------------|-------|------|
| 3 | | | | | | | | | |
| 2 | 04.08.15 | | REVISED | | | | | | |
| 1 | 11.03.15 | | REVISED | | | | | | |
| 0 | 02.01.15 | | ORIGINAL | | | DSA 36 098 0 612 | 02 | 1 | |
| REV | CN.NO. | DATE | DESCRIPTION | CHECKED | APPROVED | NEXT ASSEMBLY | ITEM | QTY | |
| MATERIAL | | | FINISH | PROJ. | | TOL.GEN. ± | IS: 2102 | | PRJ. |
| ALUMINIUM ALLOY 6061-T6/6082-T6 | | | C.C COATING | | | TOL.AXIS. ± (MED.) | | | 098 |
| DRAWN | CHECKED | APPROVED | DIMNS | SCALE | TITLE | | | | |
| MANJULAL | | | mm | NTS | BOTTOM PLATE | | | | |
| DATE | 04.08.15 | DATE | DATE | DRG. NUMBER | | | SIZE | ISSUE | |
| | | | | DPD 36 098 0 616 | | | A4 | 1 | |
| | | | | | | | NO.OF SHEETS | 2 | |
| | | | | | | | | 2 | |

ENGRAVING DETAILS

XX

RESTRICTED

RESTRICTED



| | | | |
|---|-----------------------|------------------|----|
| 1 | TOP COVER | DPD 36 104 0 214 | 1 |
| 2 | BOTTOM PLATE | DPD 36 098 0 616 | 1 |
| 3 | RIGHT SIDE PLATE | DPD 36 098 0 619 | 1 |
| 4 | LEFT SIDE PLATE | DPD 36 098 0 617 | 1 |
| 5 | REAR PLATE | DPD 36 098 0 618 | 1 |
| 6 | HELICOIL M4X0.7X8 | FIS 04 008 0 101 | 20 |
| 7 | M4x15 CH HD SCREW, SS | FSS 04 012 1 201 | 20 |
| 8 | M4 SPRING WASHER, SS | FWS 04 000 0 501 | 20 |
| 9 | M4 PLAIN WASHER, SS | FWS 04 000 0 101 | 20 |

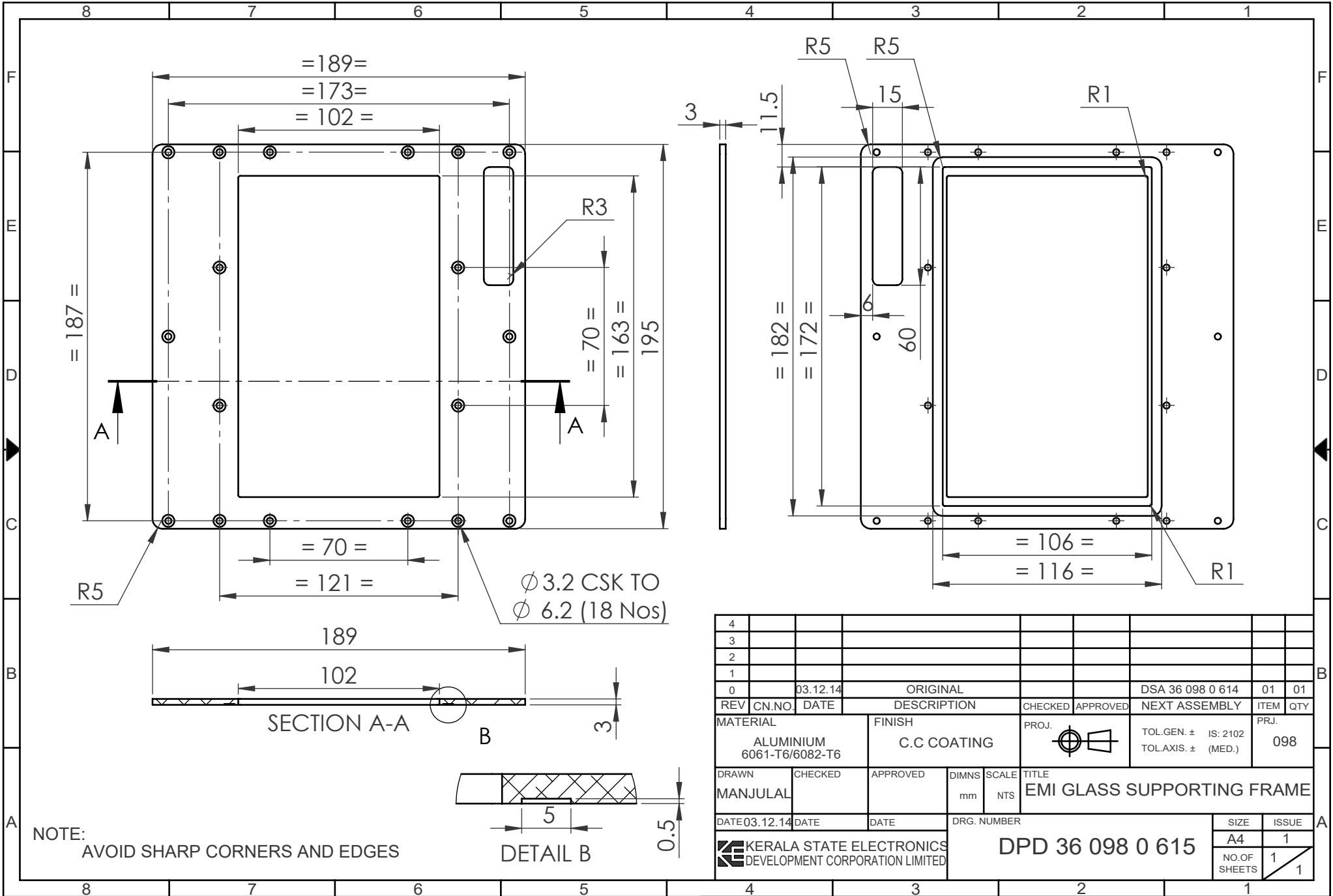
- NOTE:**
- AFTER ASSEMBLING, ALL JOINTS AND SCREWED HOLES ON OUTER SURFACE TO BE FILLED WITH M- SEAL AND LEVELLED SMOOTH BEFORE PAINTING
 - FINISH: C.C COATING AND PAINTED D.A GREY POWDER COATING TO IS:5 SHADE NO:632
 - PAINTING OUTER SURFACE ONLY AFTER MATCHING WITH THE FRONT DOOR(DPD 36 098 0 202)
 - FASTENERS TO BE USED FOR ASSEMBLY
 - A. M4 x 15 CHEESE HEAD SCREW (S.S)
 - B. M4 PLAIN WASHER
 - C. M4 SPRING WASHER
 - D. HELICOIL INSERT M4X0.7X6

| 4 | | | | | | | | | |
|--|----------|----------|-------------|---------|--------------|---------------------|-------|------|--|
| 3 | | | | | | | | | |
| 2 | | | | | | | | | |
| Δ | 23.02.15 | | REVISED | | | | | | |
| 0 | 08.01.15 | | ORIGINAL | | | DMA 36 098 0 604 | 1 | 1 | |
| REV | CN.NO. | DATE | DESCRIPTION | CHECKED | APPROVED | NEXT ASSEMBLY | ITEM | QTY | |
| MATERIAL | | | FINISH | | PROJ. | TOL.GEN. ± IS: 2102 | | PRJ. | |
| | | | SEE NOTE | | | TOL.AXIS. ± (MED.) | | 098 | |
| DRAWN | CHECKED | APPROVED | DIMNS | SCALE | TITLE | | | | |
| NANDHU | | | mm | NTS | BOX ASSEMBLY | | | | |
| DATE 23.02.15 | DATE | DATE | DRG. NUMBER | | | SIZE | ISSUE | | |
| KERALA STATE ELECTRONICS DEVELOPMENT CORPORATION LIMITED | | | | | | DSA 36 098 0 612 | A4 | 1 | |
| | | | | | | NO.OF SHEETS | 1 | | |
| | | | | | | | 1 | | |

XX

RESTRICTED

RESTRICTED

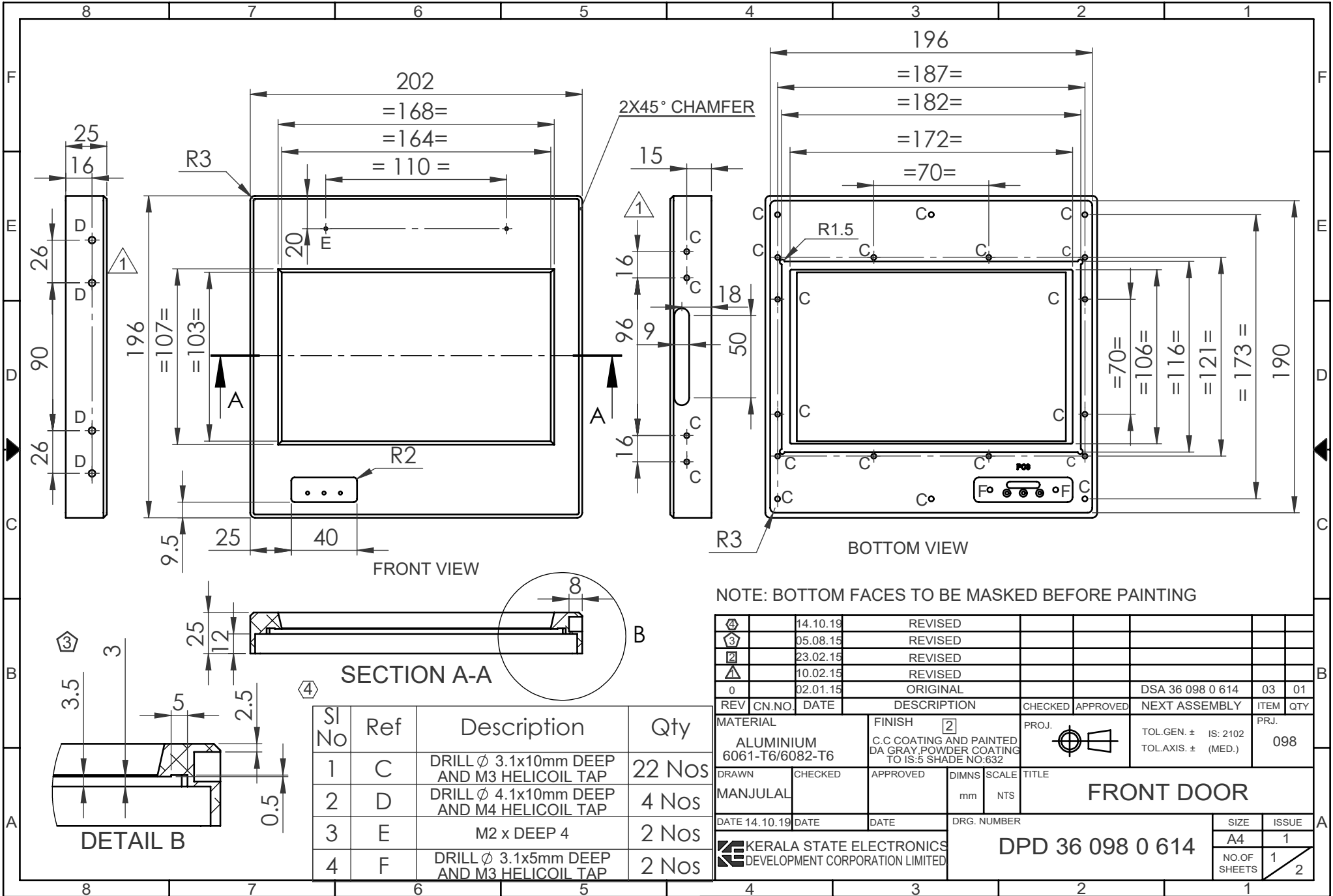


NOTE: AVOID SHARP CORNERS AND EDGES

| 4 | | | | | | | | | |
|--|----------|-------------|-------------|----------|------------------|---------------------|------|----------------------------|--|
| 3 | | | | | | | | | |
| 2 | | | | | | | | | |
| 1 | | | | | | | | | |
| 0 | 03.12.14 | ORIGINAL | | | DSA 36 098 0 614 | 01 | 01 | | |
| REV | CN.NO. | DATE | DESCRIPTION | CHECKED | APPROVED | NEXT ASSEMBLY | ITEM | QTY | |
| MATERIAL | | FINISH | | PROJ. | | TOL.GEN. ± IS: 2102 | | PRJ. | |
| ALUMINIUM 6061-T6/6082-T6 | | C.C COATING | | | | TOL.AXIS ± (MED.) | | 098 | |
| DRAWN | | CHECKED | | APPROVED | | DIMNS | | SCALE | |
| MANJULAL | | | | | | mm | | NTS | |
| DATE | | DATE | | DATE | | DRG. NUMBER | | TITLE | |
| 03.12.14 | | | | | | DPD 36 098 0 615 | | EMI GLASS SUPPORTING FRAME | |
| Kerala State Electronics Development Corporation Limited | | | | | | SIZE | | ISSUE | |
| | | | | | | A4 | | 1 | |
| | | | | | | NO.OF SHEETS | | 1 | |
| | | | | | | | | 1 | |

RESTRICTED

RESTRICTED

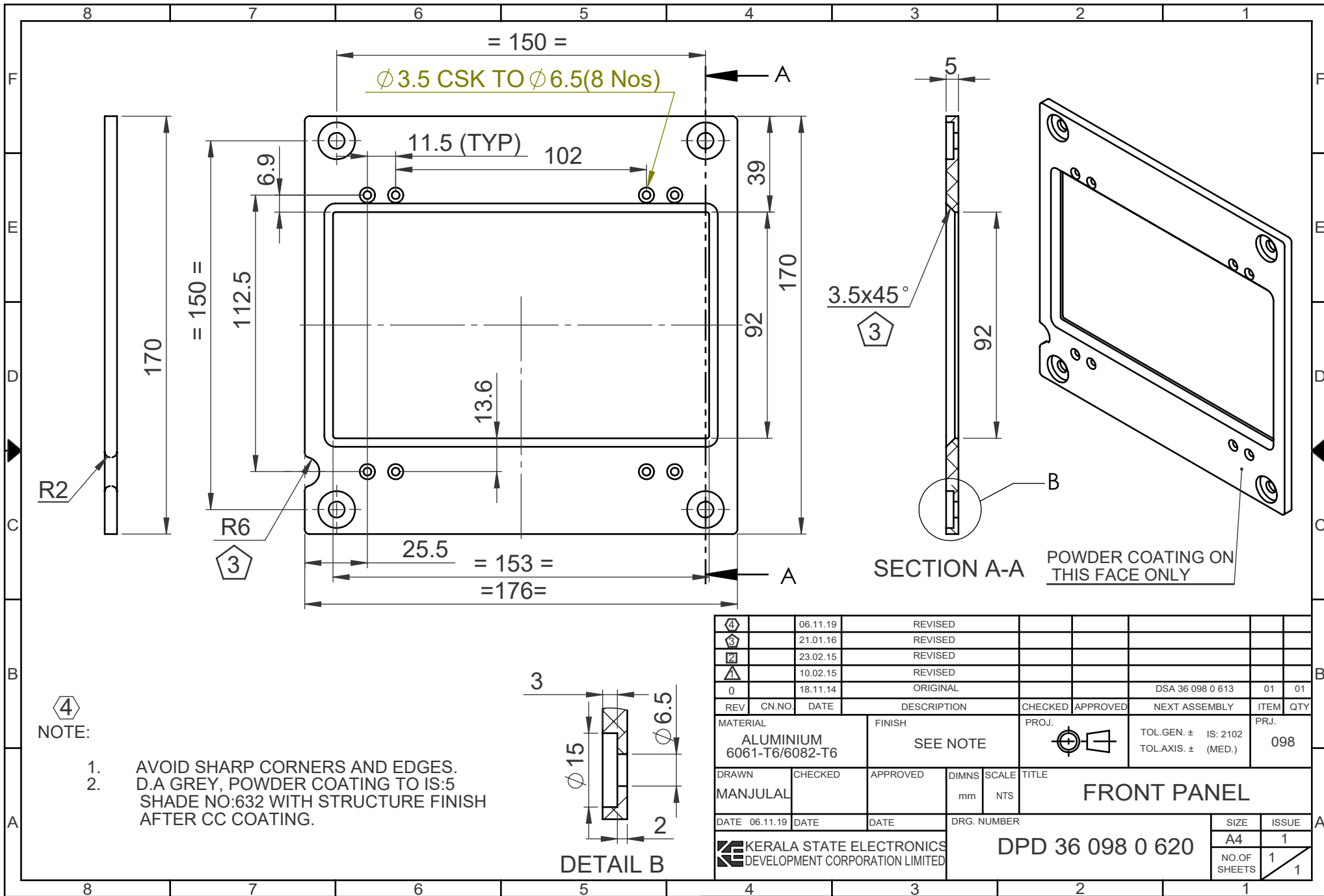


NOTE: BOTTOM FACES TO BE MASKED BEFORE PAINTING

| ④ | 14.10.19 | REVISED | | | | | | | |
|---|----------|------------------|---|--------------|----------|-------------------|------------------|-------|----|
| ③ | 05.08.15 | REVISED | | | | | | | |
| ② | 23.02.15 | REVISED | | | | | | | |
| ① | 10.02.15 | REVISED | | | | | | | |
| 0 | 02.01.15 | ORIGINAL | | | | | DSA 36 098 0 614 | 03 | 01 |
| REV | CN.NO. | DATE | DESCRIPTION | CHECKED | APPROVED | NEXT ASSEMBLY | ITEM | QTY | |
| MATERIAL | | | FINISH | PROJ. | | TOL.GEN. ± | IS: 2102 | PRJ. | |
| ALUMINIUM 6061-T6/6082-T6 | | | C.C COATING AND PAINTED DA GRAY POWDER COATING TO IS:5 SHADE NO:632 | [Symbol] | | TOL.AXIS ± (MED.) | | 098 | |
| DRAWN | | CHECKED | APPROVED | DIMNS | SCALE | TITLE | | | |
| MANJULAL | | | | mm | NTS | FRONT DOOR | | | |
| DATE 14.10.19 | | DATE | DATE | DRG. NUMBER | | SIZE | | ISSUE | |
| KERALA STATE ELECTRONICS DEVELOPMENT CORPORATION LIMITED | | DPD 36 098 0 614 | | A4 | | 1 | | | |
| | | | | NO.OF SHEETS | | 1 | | 2 | |

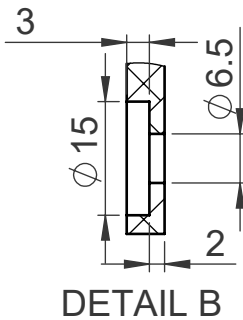
RESTRICTED

RESTRICTED



NOTE:

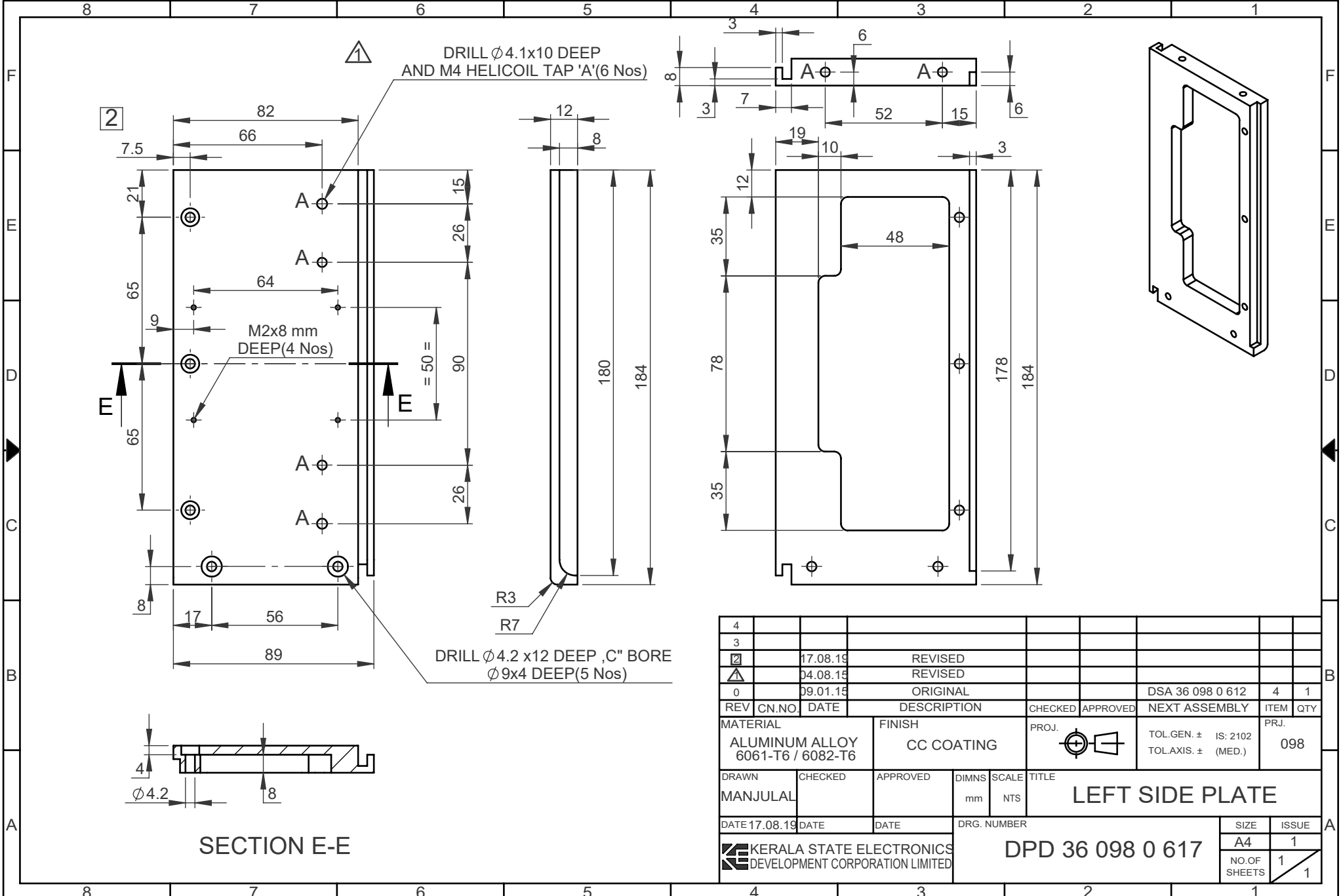
1. AVOID SHARP CORNERS AND EDGES.
2. D.A GREY, POWDER COATING TO IS:5 SHADE NO:632 WITH STRUCTURE FINISH AFTER CC COATING.



| 4 | 06.11.19 | REVISED | | | | | | | | |
|--|----------|----------|-------------|------------------|-------------|---------------------|------------------|------|----|--|
| 3 | 21.01.16 | REVISED | | | | | | | | |
| 2 | 23.02.15 | REVISED | | | | | | | | |
| 1 | 10.02.15 | REVISED | | | | | | | | |
| 0 | 18.11.14 | ORIGINAL | | | | | DSA 36 098 0 613 | 01 | 01 | |
| REV | CN.NO. | DATE | DESCRIPTION | CHECKED | APPROVED | NEXT ASSEMBLY | ITEM | QTY | | |
| MATERIAL | | FINISH | | PROJ. | | TOL.GEN. ± IS: 2102 | | PRJ. | | |
| ALUMINIUM 6061-T6/6082-T6 | | SEE NOTE | | | | TOL.AXIS. ± (MED.) | | 098 | | |
| DRAWN | CHECKED | APPROVED | DIMNS | SCALE | TITLE | | | | | |
| MANJULAL | | | mm | NTS | FRONT PANEL | | | | | |
| DATE | 06.11.19 | DATE | DATE | DRG. NUMBER | | SIZE | ISSUE | | | |
| KERALA STATE ELECTRONICS DEVELOPMENT CORPORATION LIMITED | | | | DPD 36 098 0 620 | | | A4 | 1 | | |
| | | | | | | NO.OF SHEETS | 1 | | | |

RESTRICTED

RESTRICTED



SECTION E-E

| 4 | | | | | | | | | |
|---|---------|------------|------------------|---------|-----------------|---------------------|--------------|------|---|
| 3 | | | | | | | | | |
| 2 | | 17.08.19 | REVISED | | | | | | |
| 1 | | 04.08.15 | REVISED | | | | | | |
| 0 | | 09.01.15 | ORIGINAL | | | DSA 36 098 0 612 | 4 | 1 | |
| REV | CN.NO. | DATE | DESCRIPTION | CHECKED | APPROVED | NEXT ASSEMBLY | ITEM | QTY | |
| MATERIAL | | FINISH | | PROJ. | | TOL.GEN. ± IS: 2102 | | PRJ. | |
| ALUMINUM ALLOY 6061-T6 / 6082-T6 | | CC COATING | | | | TOL.AXIS. ± (MED.) | | 098 | |
| DRAWN | CHECKED | APPROVED | DIMNS | SCALE | TITLE | | | | |
| MANJULAL | | | mm | NTS | LEFT SIDE PLATE | | | | |
| DATE 17.08.19 | DATE | DATE | DRG. NUMBER | | SIZE | | ISSUE | | |
| | | | DPD 36 098 0 617 | | A4 | | 1 | | |
| KERALA STATE ELECTRONICS DEVELOPMENT CORPORATION LIMITED | | | | | | | NO.OF SHEETS | | 1 |

XX

4

3

2

1

F

F

E

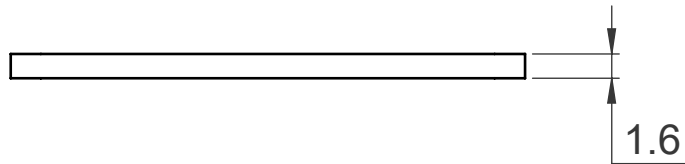
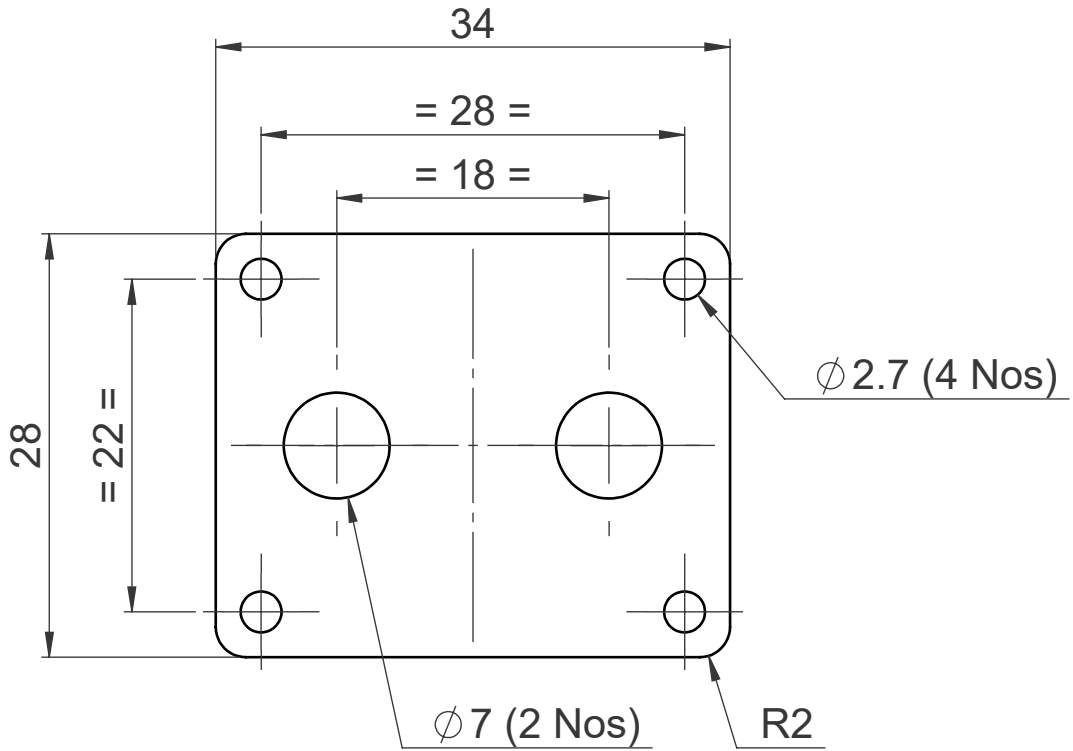
E

D

D

C

C



B

B

A

A

| 4 | | | | | | | | | | |
|-----------------|--------|----------|-------------|----------|--|------------------|----------|--------------------|--------------|-------|
| 3 | | | | | | | | | | |
| 2 | | | | | | | | | | |
| 1 | | | | | | | | | | |
| 0 | | 08.01.15 | ORIGINAL | | | | | DMA 36 098 0 604 | 41 | 1 |
| REV | CN.NO. | DATE | DESCRIPTION | | | CHECKED | APPROVED | NEXT ASSEMBLY | ITEM | QTY |
| MATERIAL | | | FINISH | | | PROJ. | | TOL.GEN. ± IS:2102 | | PRJ. |
| ALUMINIUM SHEET | | | CC COATING | | | | | TOL.AXIS. ± (MED) | | 098 |
| DRAWN | | CHECKED | | APPROVED | | DIMNS | SCALE | TITLE | | |
| NANDHU | | | | | | mm | NTS | PLATE-1 | | |
| DATE 08.01.15 | | DATE | | DATE | | DRG. NUMBER | | | SIZE | ISSUE |
| | | | | | | DPD 36 098 0 625 | | | A4 | 1 |
| | | | | | | | | | NO.OF SHEETS | 1 |
| | | | | | | | | | 1 | 1 |

4

3

2

1

4

3

2

1

F

F

E

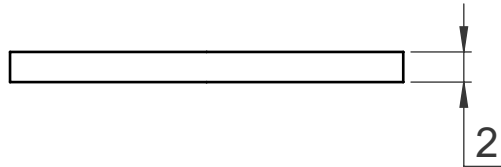
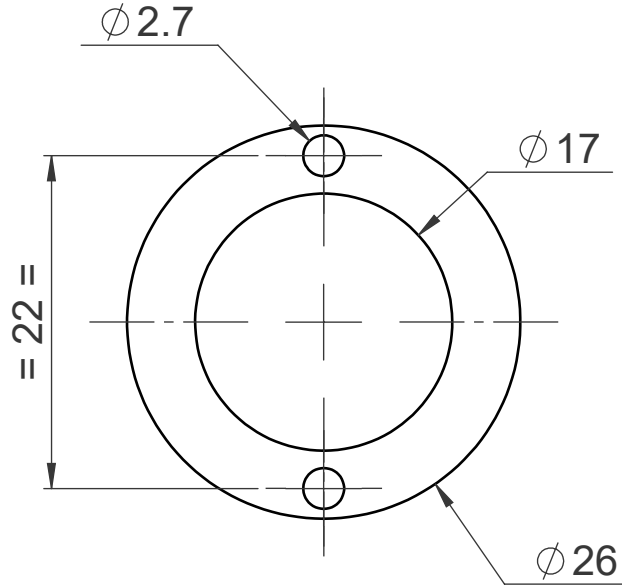
E

D

D

C

C



B

B

A

A

| 4 | | | | | | | | | | |
|--|--------|----------|-------------|----------|--|------------------|----------|------------------------|--------------|-------|
| 3 | | | | | | | | | | |
| 2 | | | | | | | | | | |
| 1 | | | | | | | | | | |
| 0 | | 08.01.15 | ORIGINAL | | | | | DMA 36 098 0 604 | 42 | 1 |
| REV | CN.NO. | DATE | DESCRIPTION | | | CHECKED | APPROVED | NEXT ASSEMBLY | ITEM | QTY |
| MATERIAL | | | FINISH | | | PROJ. | | TOL.GEN. \pm IS:2102 | | PRJ. |
| ALUMINUM SHEET | | | CC COATING | | | | | TOL.AXIS. \pm (MED) | | 098 |
| DRAWN | | CHECKED | | APPROVED | | DIMNS | SCALE | TITLE | | |
| NANDHU | | | | | | mm | NTS | PLATE-2 | | |
| DATE 08.01.15 | | DATE | | DATE | | DRG. NUMBER | | | SIZE | ISSUE |
| | | | | | | DPD 36 098 0 626 | | | A4 | 1 |
| KERALA STATE ELECTRONICS DEVELOPMENT CORPORATION LIMITED | | | | | | | | | NO.OF SHEETS | 1 |
| | | | | | | | | | 1 | 1 |

4

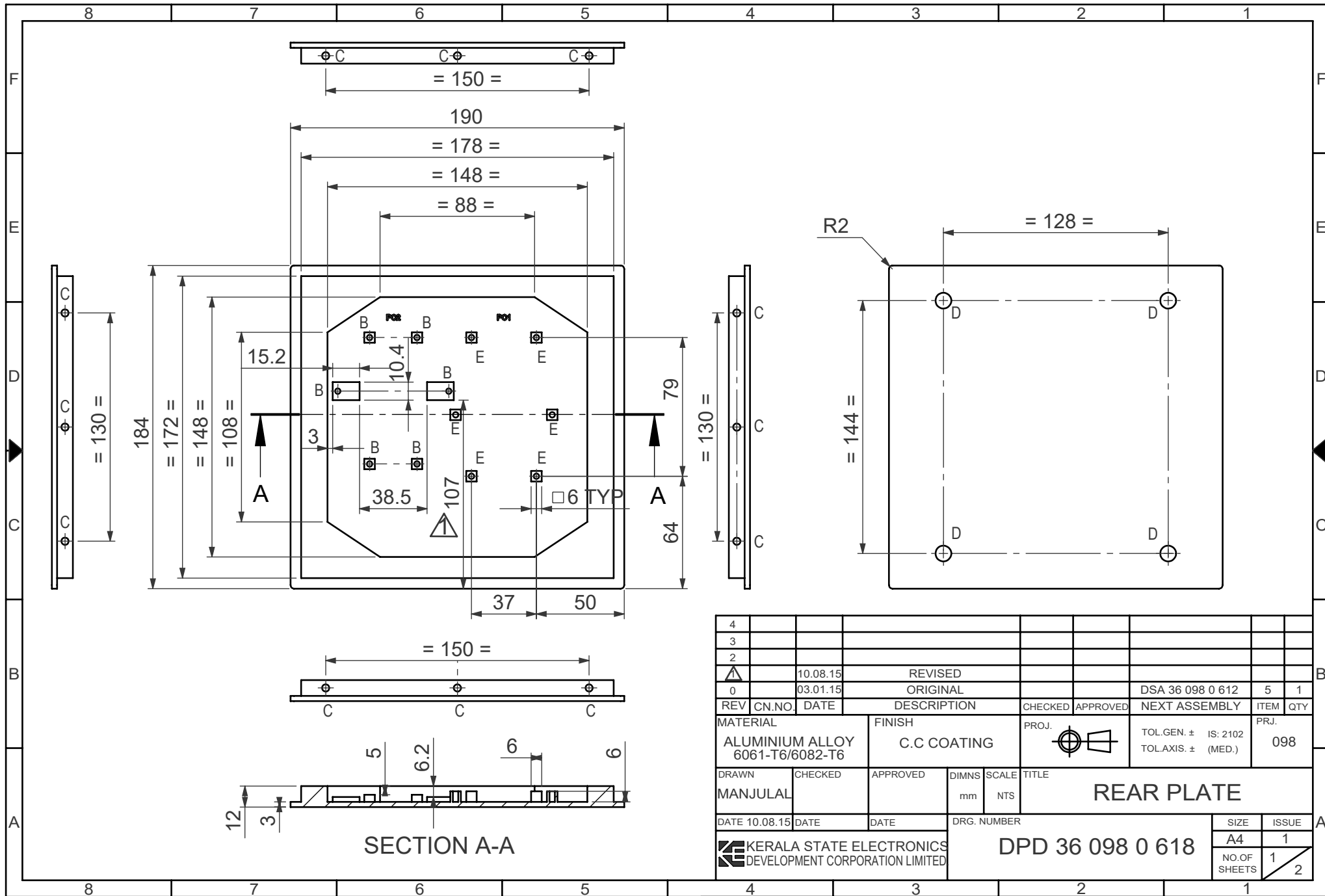
3

2

1

RESTRICTED

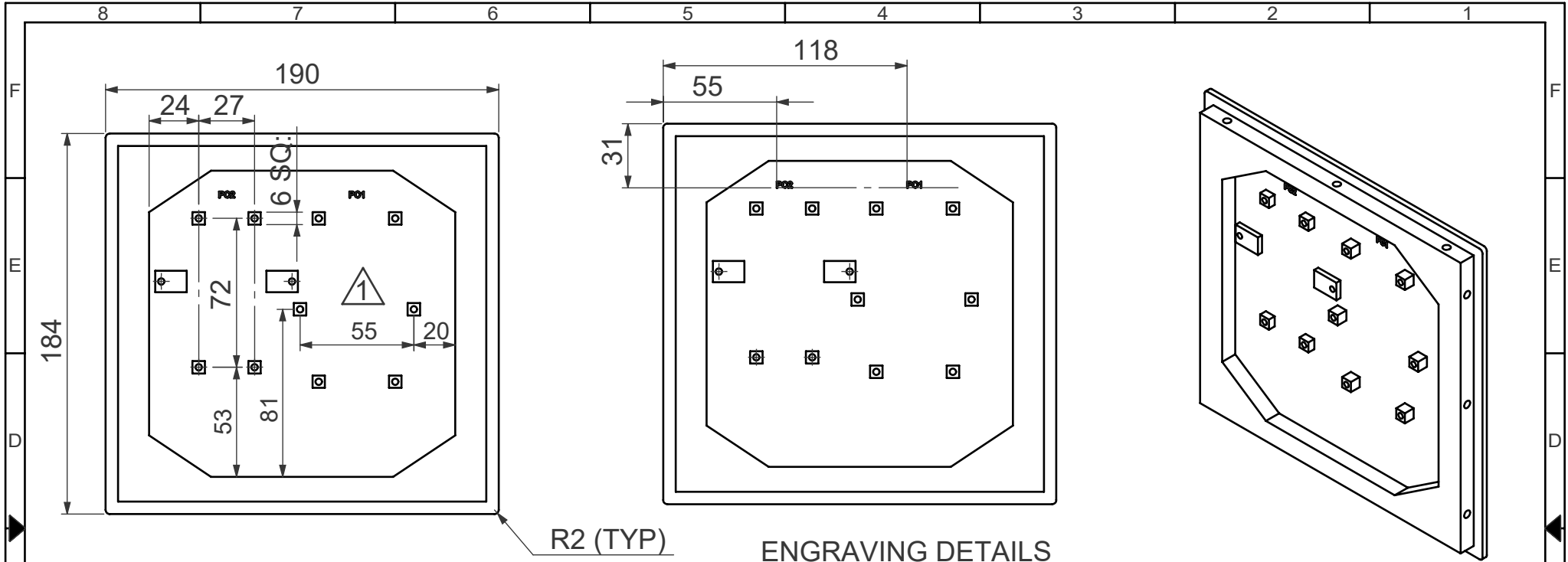
RESTRICTED



| 4 | | | | | | | | | |
|------------------------------------|----------|-------------|------------------|---------|------------------|---------------------|-------|------|--|
| 3 | | | | | | | | | |
| 2 | | | | | | | | | |
| 1 | 10.08.15 | REVISED | | | | | | | |
| 0 | 03.01.15 | ORIGINAL | | | DSA 36 098 0 612 | 5 | 1 | | |
| REV | CN.NO. | DATE | DESCRIPTION | CHECKED | APPROVED | NEXT ASSEMBLY | ITEM | QTY | |
| MATERIAL | | FINISH | | PROJ. | | TOL.GEN. ± IS: 2102 | | PRJ. | |
| ALUMINIUM ALLOY 6061-T6/6082-T6 | | C.C COATING | | | | TOL.AXIS. ± (MED.) | | 098 | |
| DRAWN | CHECKED | APPROVED | DIMNS | SCALE | TITLE | | | | |
| MANJULAL | | | mm | NTS | REAR PLATE | | | | |
| DATE 10.08.15 | DATE | DATE | DRG. NUMBER | | SIZE | | ISSUE | | |
| | | | DPD 36 098 0 618 | | A4 | | 1 | | |
| | | | | | NO.OF SHEETS | | 1 | | |
| | | | | | | | 2 | | |

RESTRICTED

RESTRICTED



ENGRAVING DETAILS

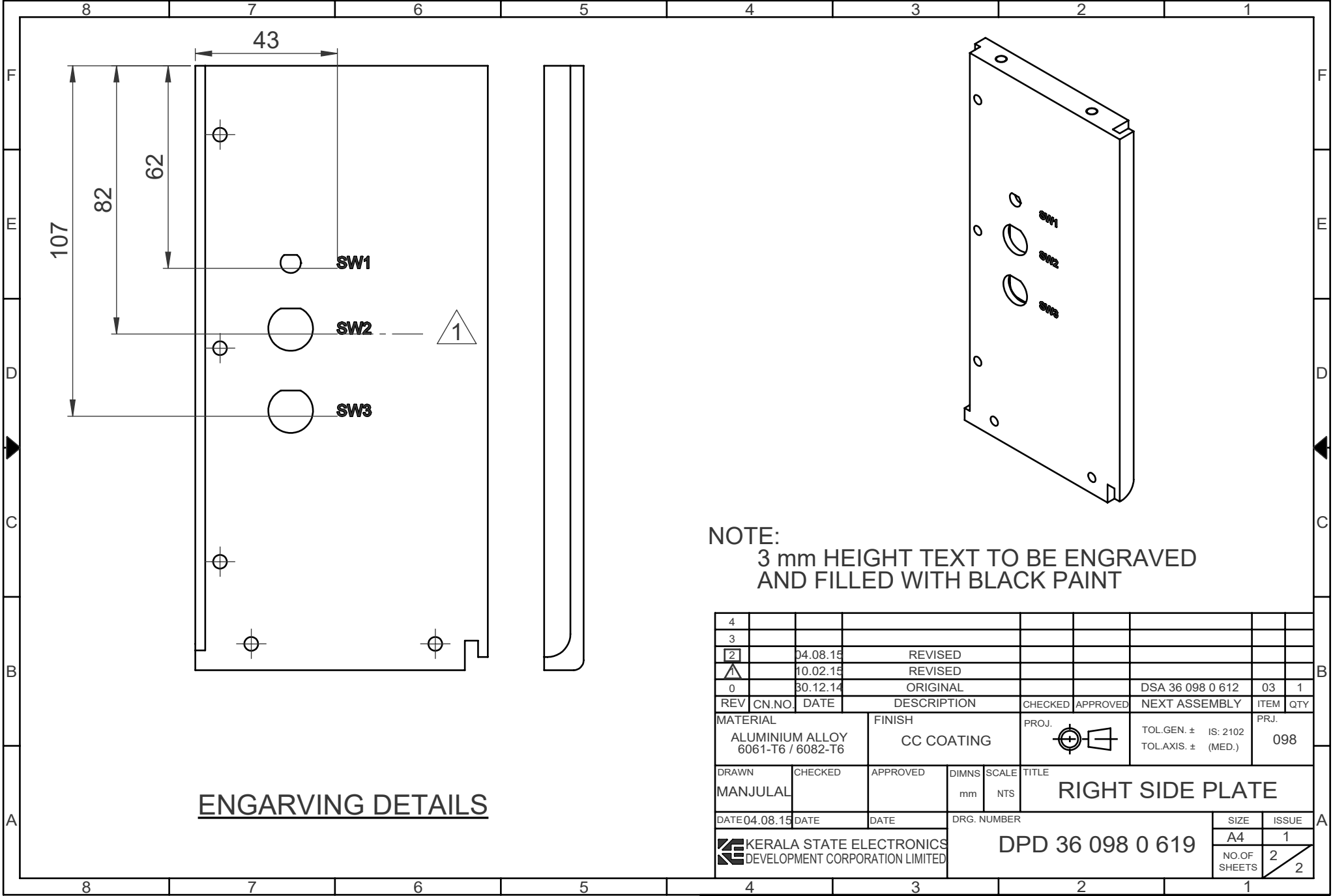
NOTE:
3mm HEIGHT TEXT TO BE ENGRAVED
AND FILLED WITH BLACK PAINT

| SL NO | HOLE | DESCRIPTION | QTY |
|-------|------|---|-----|
| 1 | B | DRILL ϕ 3.1x4 DEEP, M3 HELICOIL TAP | 6 |
| 2 | C | DRILL ϕ 4.1x10 DEEP, M4 HELICOIL TAP | 12 |
| 3 | D | DRILL ϕ 8.2x10 DEEP, M8 HELICOIL TAP | 4 |
| 4 | E | DRILL ϕ 3.1x7 DEEP, M3 HELICOIL TAP | 6 |

| 4 | | | | | | | | | |
|--|----------|-------------|-------------|---------|------------|-------------------------|-------|------|--|
| 3 | | | | | | | | | |
| 2 | | | | | | | | | |
| 1 | | | | | | | | | |
| 0 | 10.08.15 | REVISED | | | | | | | |
| | 03.01.15 | ORIGINAL | | | | DSA 36 098 0 612 | 5 | 1 | |
| REV | CN.NO. | DATE | DESCRIPTION | CHECKED | APPROVED | NEXT ASSEMBLY | ITEM | QTY | |
| MATERIAL | | FINISH | | PROJ. | | TOL.GEN. \pm IS: 2102 | | PRJ. | |
| ALUMINIUM ALLOY 6061-T6/6082-T6 | | C.C COATING | | | | TOL.AXIS. \pm (MED.) | | 098 | |
| DRAWN | CHECKED | APPROVED | DIMNS | SCALE | TITLE | | | | |
| MANJULAL | | | mm | NTS | REAR PLATE | | | | |
| DATE 10.08.15 | DATE | DATE | DRG. NUMBER | | | SIZE | ISSUE | | |
| KERALA STATE ELECTRONICS DEVELOPMENT CORPORATION LIMITED | | | | | | DPD 36 098 0 618 | A4 | 1 | |
| | | | | | | NO.OF SHEETS | 2 | | |
| | | | | | | | 2 | | |

RESTRICTED

RESTRICTED

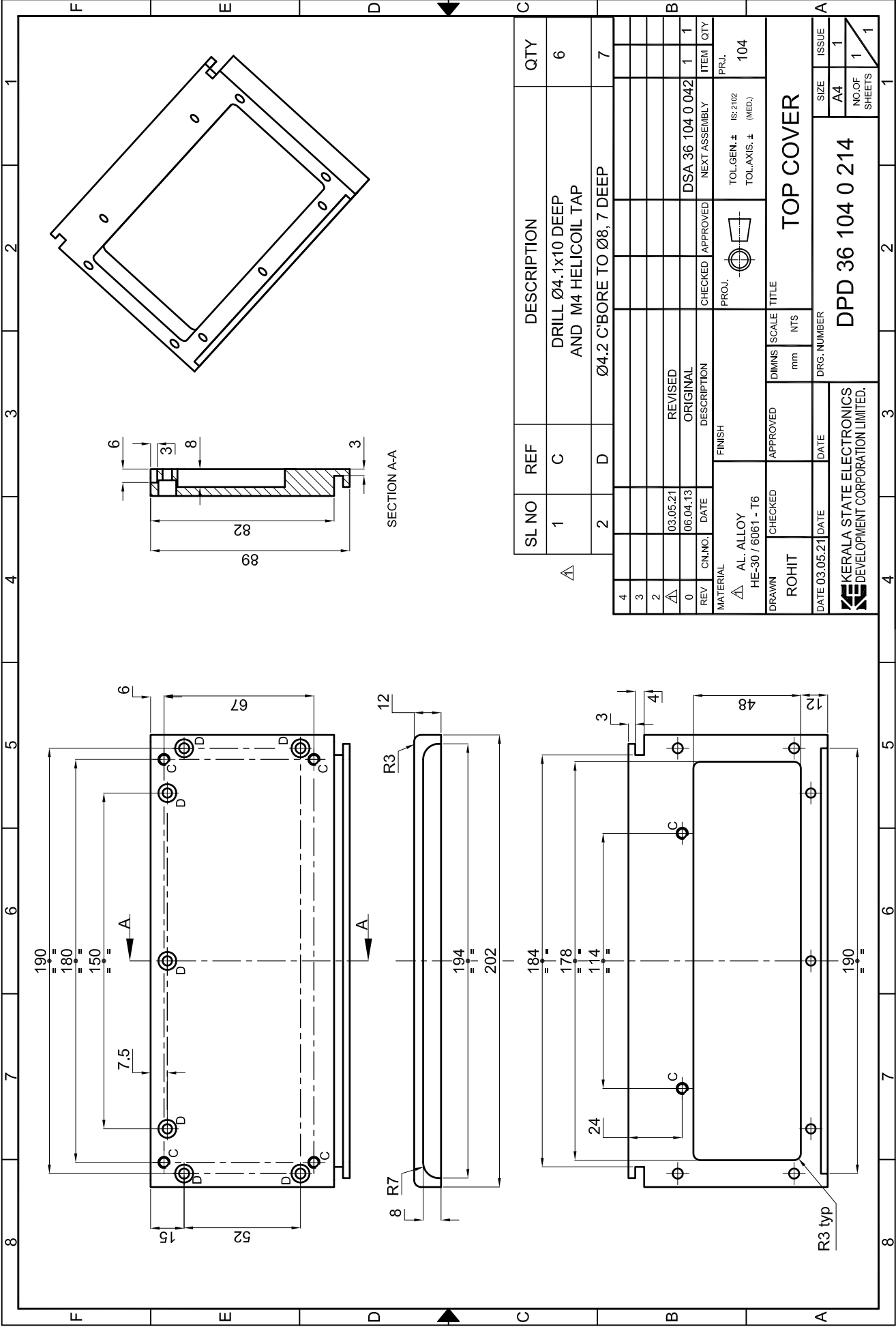


NOTE:
3 mm HEIGHT TEXT TO BE ENGRAVED
AND FILLED WITH BLACK PAINT

ENGARVING DETAILS

| 4 | | | | | | | | | | |
|--------------------------------------|----------|----------|-------------|---------|------------------|---------------------|------|------------------|----|---|
| 3 | | | | | | | | | | |
| 2 | 04.08.15 | | REVISED | | | | | | | |
| 1 | 10.02.15 | | REVISED | | | | | | | |
| 0 | 30.12.14 | | ORIGINAL | | | | | DSA 36 098 0 612 | 03 | 1 |
| REV | CN.NO. | DATE | DESCRIPTION | CHECKED | APPROVED | NEXT ASSEMBLY | ITEM | QTY | | |
| MATERIAL | | | FINISH | PROJ. | | TOL.GEN. ± IS: 2102 | PRJ. | | | |
| ALUMINIUM ALLOY 6061-T6 / 6082-T6 | | | CC COATING | | | TOL.AXIS. ± (MED.) | 098 | | | |
| DRAWN | CHECKED | APPROVED | DIMNS | SCALE | TITLE | | | | | |
| MANJULAL | | | mm | NTS | RIGHT SIDE PLATE | | | | | |
| DATE 04.08.15 | DATE | DATE | DRG. NUMBER | | | SIZE | | ISSUE | | |
| | | | | | DPD 36 098 0 619 | | | A4 | 1 | |
| | | | | | NO.OF SHEETS | | 2 | | | |

XX



| SL NO | REF | DESCRIPTION | QTY |
|-------|-----|--|-----|
| 1 | C | DRILL Ø4.1x10 DEEP AND M4 HELICOIL TAP | 6 |
| 2 | D | Ø4.2 C'BORE TO Ø8, 7 DEEP | 7 |

| REV | CN.NO. | DATE | DESCRIPTION | CHECKED | APPROVED | NEXT ASSEMBLY | ITEM | QTY |
|-----|----------|------|-------------|---------|----------|------------------|------|-----|
| Δ | 03.05.21 | | REVISED | | | DSA 36 104 0 042 | 1 | 1 |
| 0 | 06.04.13 | | ORIGINAL | | | | | |

| | | | | | | | | |
|---|---------|----------|------------------|---------------------------------|-------|------|---------------|--|
| MATERIAL | | FINISH | | PROJ. | | PRJ. | | |
| AL. ALLOY HE-30 / 6061 - T6 | | | | IS: 2102 TOL. AXIS. ± (MED.) | | 104 | | |
| DRAWN | CHECKED | APPROVED | DIMENS | | SCALE | | TITLE | |
| ROHIT | | | mm | NTS | | | TOP COVER | |
| DATE 03.05.21 | DATE | DATE | DRG. NUMBER | | SIZE | | ISSUE | |
| | | | DPD 36 104 0 214 | | A4 | | 1 | |
| KERALA STATE ELECTRONICS DEVELOPMENT CORPORATION LIMITED. | | | | | | | NO. OF SHEETS | |
| | | | | | | | 1 / 1 | |